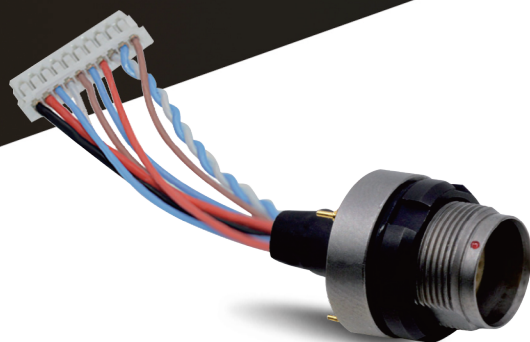




RM-G Series

Advanced Miniature Small and Light Weight Connector

- Secure high performance in quick release system
- Compact design and light weight construction
- Sealed up to IP68 and hermetic
- The unique design of the contact core makes it safe and reliable in all environments
- 5 different alignment keys and Polarized Keying System to avoid cross-interface
- Hermetic receptacle structure can be suitable for equipment requiring airtightness
- Robust and shock resistant designs
- 360° EMC shielded
- Available solder, PCB and right angle PCB contact



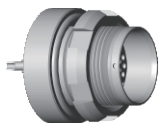
RM-G Series

Plugs

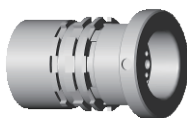


FSE

Receptacles

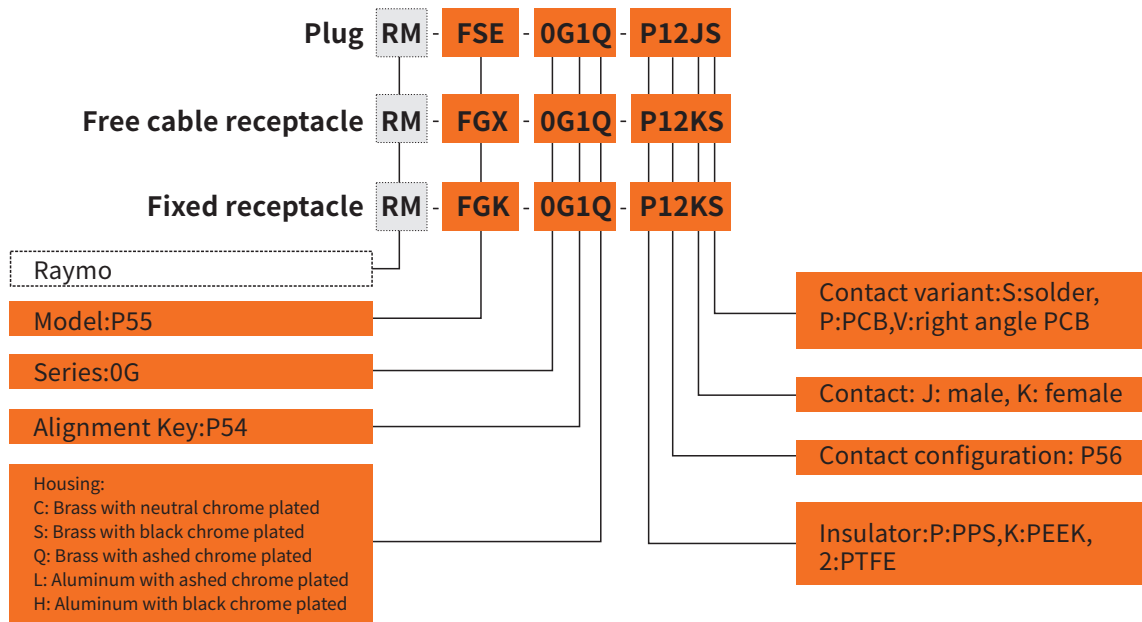


FGK



PGX

Part Numbering System



Part No.Example

Straight plug

RM-FSE-0G1Q-P12JS straight plug,0G series, key 1, multipole 12 contacts, outer shell in gun chrome-plated brass,PPS insulator, male solder contacts,IP68.

Free receptacle

RM-PGX-0G1Q-P12KS free cable receptacle,0G series, key 1, multipole 12 contacts, outer shell in gun chrome-plated brass, PPS insulator, female solder contacts,IP68.

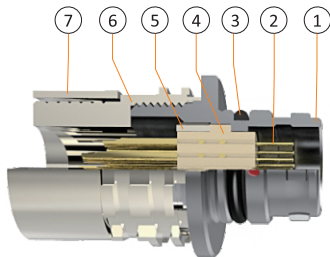
Fixed receptacle

RM-FGK-0G1Q-P12KS fixed receptacle,0G series, key 1, outer shell in gun chrome-plated brass,PPS insulator, female solder contacts,IP68.

Part Section Showing Internal Components

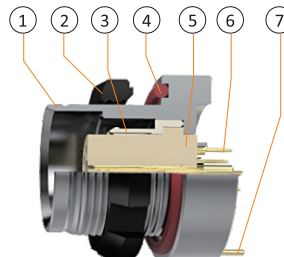
Straight Plug

- ① Outer shell
- ② Male contact
- ③ O-ring
- ④ Insulator
- ⑤ Retaining ring
- ⑥ Collet nut
- ⑦ EMI ring



Fixed Receptacle

- ① Outer shell
- ② Hexagonal nut
- ③ Fixed spacer
- ④ O-ring
- ⑤ Insulator
- ⑥ Female contact
- ⑦ Ground tag



Technical Characteristics

Mechanical and Climatical

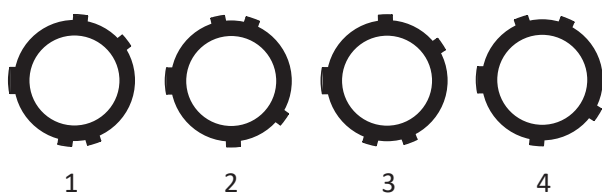
Characteristics	Value	Standard
Endurance	>5000cycles	IEC60512-5test9a
Humidity	Up to 95% at 60°C	
Temperature range	-55°C,+250°C	
Resistance to vibration	10-2000Hz,15g	IEC 60512-4 test 6d
Shock resistance	100g,6ms	IEC 60512-4 test 6c
Salt spray corrosion test	>96hrs	IEC 60512-6 test 11f
Protection index (mated)	IP68	IEC 60529
Climatical category	55/175/21	IEC 60068-1

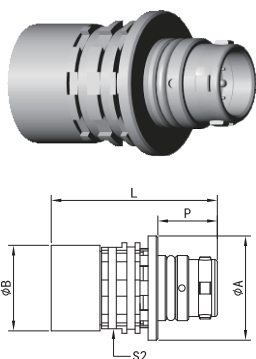
Electrical

Characteristics		Value	Standard
Shielding efficiency	at 10 MHZ	>65 dB	IEC 60619-1-3
	at 1 GHz	>45 dB	IEC 60619-1-3

Alignment Key

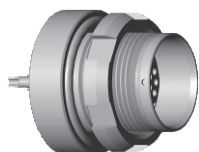
Key 1 is standard,if you need other keys,please indicated





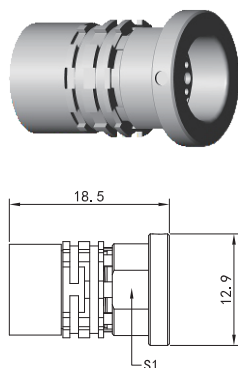
RM-FSE straight plug

Reference		Dimensions(mm)					
Model	Series	A	B	P	L	S2	
RM-FSE	0G	12.8	10.5	7.3	20.4	10.0	



RM-FGK Sealed Back Panel Mount Receptacle
with ground tag

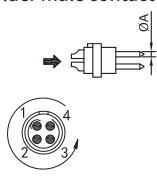
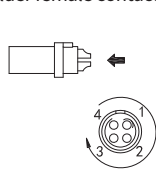
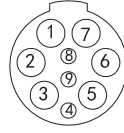
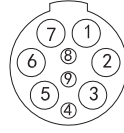
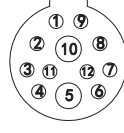
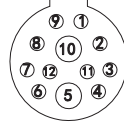
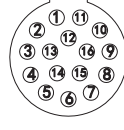
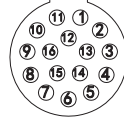
Reference		Dimensions(mm)						
Model	Series	A	N	e	E	L	S1	
RM-FGK	0G	13.2	8.0	M10*0.5	3.5	15.1	9.0	



RM-PGX free cable receptacle

Reference		Dimensions(mm)		
Model	Series	A	N	S1
RM-PGX	0G	12.9	18.5	9.6

Insulator Configuration

0G	solder male contact	solder female contact	Code	Contact No.	Ø A (MM)	Solder contact	PCB straight contact	PCB elbow contact	Test voltage(contact -Shell) k/v AC-rms	Test voltage(contact -contact)k/v AC-rms	Rated current /A
											
			P09	6	0.7	●	●	●	1.00	0.95	5.0
				3	0.3	●	●	●	0.8	0.65	1.0
			P12	2	0.7	●	●	●	1.00	0.95	5.0
				10	0.3	●	●	●	0.8	0.65	1.0
			P16	16	0.3	●	●	●	0.8	0.65	1.0

- First choice alternative
 ○ Special order alternative